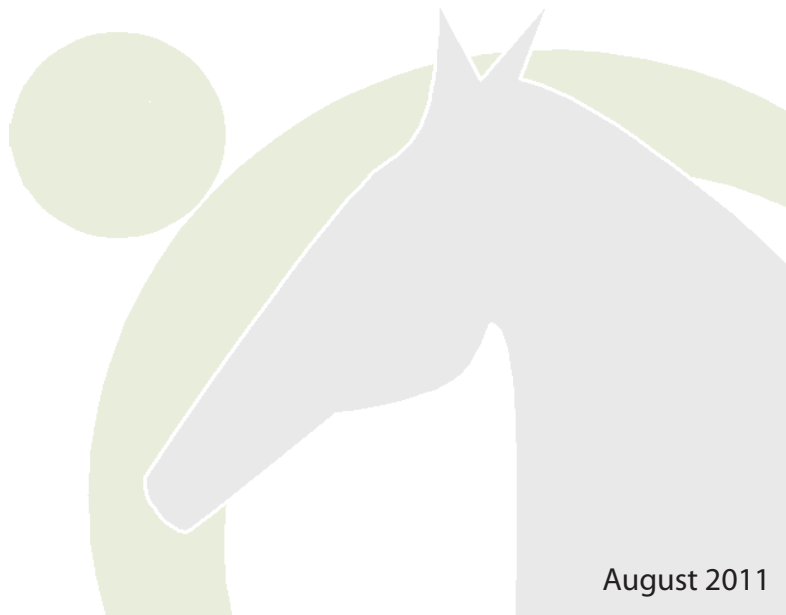


connections *communiqué*

A quarterly publication for **pbjconnections**

August 2011



PBJ Connections Helps Students Succeed

A Closer Look At Equine-Assisted Programming in schools



Emotional and behavioral health problems represent significant barriers to academic and social success at school. Studies have found emotional disability is the fastest growing special education designation in Ohio. Children and adolescents with emotional disturbances have the highest failure rates, with 50% of these students dropping out of high school.

PBJ Connections helps schools enhance their mental health services to students by providing equine-assisted therapy through a variety of programs.

Last year, Westerville City Schools developed the North Pointe Program, to serve high school students with mental health or behavioral needs. PBJ Connections was selected as a provider of alternative therapy for the students in this program.

North Pointe Program Director John Rowson says most schools do not have a mental health component to their special education programs. Kids with mental health or behavioral needs are sent to alternative schools or programs outside their school district. By supporting behavioral needs in the school, kids are able to stay in their districts, stay with their peers and avoid the stress of transition.

According to Rowson, the typical special education classroom does not usually have a therapeutic component and the North Pointe Program chose PBJ Connections as one of their therapy providers to enhance

their curriculum and make therapy fun and effective.

"The classroom setting and typical therapy programs can be restrictive and intimidating to students," said Rowson. "Programs, like PBJ Connections, offer effective therapy in the least restrictive environment these kids are able to succeed in. Without these programs, we are not much different than other typical school-based E.D. programs."

Rowson says he sees real power in the equine-assisted programs. "At the end of the day, these kids talk to other kids and can say, 'I painted a horse today,' or 'I learned how to groom a pony.' It gives them something to be proud of."

PBJ Connections offers their equine-assisted programming to Westerville Schools and other schools, including the Ohio School for the Deaf and Excel Academy, through their A PONY program, which provides psycho-educational group therapy to youth with emotional, behavioral or mental health issues. In addition, the organization has provided mental health services through school-based referrals since opening its doors through partnership programs such as The Excel Program, which provides services specifically to Excel Academy students, and the new RESPECT Program, which focuses on bullying issues.

For more information on school-based equine-assisted therapy programs, contact Holly Jedlicka at (614) 395-1395, or holly@pbjconnections.org.

PBJ Connections Calendar of Events

Fall Therapy Sessions	Begin September (accepting referrals now)	Pataskala & Otterbein facilities
GrandAm Rolex Race Booth	September 16-18	Mid-Ohio Raceway
Used Tack Sale	Sat., September 24	Otterbein Center for Equine Studies
Star Trek Experience Fundraiser	Sat., October 8	Studio 35 Cinema & Drafthouse
Helping Horses Help Kids Trick-Or-Treat Reception	Fri., October 28	The Bluestone (see next page for details)
Christmas Pageant	Sat., December 3	Location to be determined
Rocky's Old-Fashioned Christmas Party	Sat., December 17	Otterbein Center for Equine Studies



Helping Horses Help Kids Trick-Or-Treat Reception

Fundraiser to benefit PBJ Connections; using horses to help youth and families!



Join Presenting Sponsor Bella Vista Veterinary Services
and Honorary Chair Fran Ryan for the



2011 Helping Horses Help Kids Trick-Or-Treat Reception

Friday, October 28, 2011
7 - 10 PM

The Bluestone

583 East Broad Street, Columbus OH

- Hosted by NBC4's Cabot Rea
- Delicious and filling hors d'oeuvres
- Two complimentary drinks (cash bar thereafter)
- Exciting live & silent auctions
- Unforgettable entertainment
- Treats and more!

Business Casual or Costumes Optional.

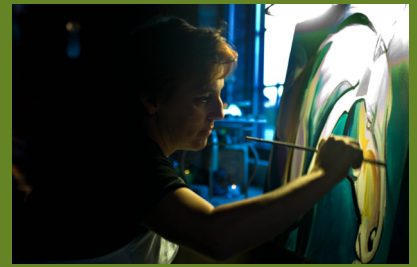
For more information or to sponsor,
contact Kelly Galindo at (614) 306-0169 or
kelly@pbjconnections.org

\$75
General
Admission

\$100
Reserved
Seating

\$1,000
Table for Ten

**\$1,000 tables include VIP
Parking for one car; Reserved
tables for 8 are also available
for \$800.*



Special Thanks to New Grad Courtney Lang

In April, Upper Arlington High School Graduate Courtney Lang hosted "A Triple Crown Affair," a special fundraiser to raise money for PBJ Connections. The cocktail party and silent auction was held at Cibo Restaurant and Bar and raised over \$3,000. If you would like to host a fundraiser for PBJ Connections, contact Kelly at (614) 306-0169 or kelly@pbjconnections.org .



"It's easy to develop a love and a bond with a horse that can keep a kid out of trouble and last a lifetime."

--Author Unknown



Guests enjoyed a peaceful day at the 5th Annual PBJ Connections Women's Retreat.

Over 50 women from around Central Ohio joined together to relax in nature, participate in fun workshops and activities and enjoy each others company, Saturday, May 21. The event raised over \$2,400 to support PBJ Connections programs--enough to provide 30 group therapy sessions. Thanks to everyone who made it possible, especially Cholle Poore Gulcur for coordinating the event, Ugur Gulcur and friends for the delicious meal, and Whole Foods Market and Meijer for donating food and supplies.

Horsemanship Program Prepares Young Adults to Succeed in the Workforce

PBJ Connections' Therapeutic Horsemanship Program is a new program designed to teach teens and young adults job and life skills by training them to manage and care for horses. Non-riding sessions focus on horse-related skills, while building self-discipline, job-readiness and communication skills.

Excel Academy Senior, Jared Holiday, says he is "willing to work to make something out of my life." Removed from his mother and father's home at age 4, Jared was raised by his grandmother and wants to be able to give back the gifts she has given him over the years by financially supporting their family.

After participating in mental health therapy sessions at PBJ Connections, Jared, with help from his Excel Academy case manager, approached Executive Director, Glenda Childress, about working at the barn. Glenda suggested he participate in the Therapeutic Horsemanship Program.

Jared, 18, who has Attention Deficit and Hyperactivity Disorder (ADHD), was assigned to Job Coach Dan Cox, who teaches him how to work with the horses, clean stalls, and perform other farm-management tasks.

Dan managed PBJ Dressage's farm from 2005-2007 and understands the challenges faced by youth with physical and/or learning disabilities.

When Dan was 5 years old, he was run over by a car. The accident left him in a coma for six weeks, with a serious traumatic brain injury, and with physical injuries that would challenge him his whole life. "Dan has overcome challenges that would seem impossible to most people," says Glenda, "He is a perfect role model and a hard worker."

Dan says he has always liked helping kids and he especially appreciates "helping those who want to work hard to do well, like Jared."



Jared Holiday (right) learns job skills and horsemanship from PBJ Connections Job Coach Dan Cox.

With Jared, Dan says it is important to focus on the steps to completing a job. "People usually want to finish the job and sometimes skip important tasks," he explained. "By focusing on self-discipline, we take all the steps we need to get to the end result."

Jared says he has learned self-respect and self-discipline and has learned "that people are all different" and ways to work with others.

Jared wants other kids to know that if they have mental health or learning issues, it is important that they "go through a program, like PBJ Connections or another mental health program, because they will help you."

After completing high school, Jared plans to attend Central Ohio Technical College to become a diesel mechanic. He also plans to help other kids by volunteering, and especially likes to help kids who are Deaf or Hard Of Hearing.

The Therapeutic Horsemanship Program is supported in part by donations made to the Edward Maddy Memorial Fund of PBJ Connections. If you would like to donate to this or any of our other programs, contact Glenda Childress at glenda@pbjconnections.org or call (740) 739-1190.

Meet Board Member Tess Philipps



Coming from a background in the juvenile justice system, Tess Philipps joined the PBJ Connections' board November 2009. She worked in the juvenile units of both the Franklin County Public Defender's Office as a law clerk; and in Licking County as an Assistant Prosecutor, where she represented Licking County Children Services in neglect, abuse, and dependency cases.

With her past work with juveniles, as well as her great love for dogs and horses, Tess says she "knows the peace that these great animals can bring to a person," so her desire to work with PBJ was a natural one.

Tess holds a Bachelor of Science degree in Journalism (BSJ) from Ohio University, a Juris Doctor (JD) from Capital University Law School, is member of the Westerville City Shade Tree Commission, and is involved in metal-working through the Columbus Cultural Arts Center where she creates copper and silver jewelry. She and her husband, J.R. live in Westerville with their three dogs Scraps, Babie and Chauncey. Their son named David attends Santa Monica College, works full-time in Los Angeles and is involved in yoga and alternative healing.

Name / Company: _____

Address: _____

City: _____ State: _____ ZIP: _____

Phone: _____ Email: _____

I wish to make the following donation. \$ _____ Cash/Check Enclosed

Mail to: PBJ Connections. 9800 Jug Street Road NW. Pataskala OH 43062. **Online:** <http://www.pbjconnections.org>

Is this gift in honor/memory of someone? Yes No Name of honoree: _____

Address of honoree to send acknowledgement: _____

May we publish your gift information in our newsletter and/or online? Name: Yes No Comments: Yes No

Comments: _____

Please remove me from mailing list.

Founders' Circle – With your contribution of \$1,000.00 or more, a child can participate in eight weekly individual or family sessions.

Builders' Circle – Your donation of \$600.00 can sponsor a child in 10 weeks of group therapy sessions.

Sustainers' Circle – Your donation of \$300.00 can sponsor a young boy or girl for 5 weeks of group therapy.

Contributors – Your donation of \$135.00 can help one youth receive one equine-assisted therapy session.

Please join us in welcoming the following new members of the PBJ Connections family:

New Staff: Sherri Luketic, Program Manager

New Board Members: Brenda Doner; Bill Peters

from State Auto Insurance; Paul Vetter from

Fahlgren Mortine Public Relations and Linda

Weigand from Banner Insurance Services

Board of Directors

President: Lois Szudy

VPresident: Lyn Green

Secretary: Tess Philipps

Shanelle Boyd

Brenda Doner

Todd Erdy

Scott Harris

Holly Jedlicka, MSW, LISW

Bill Peters

Dr. Jeff Reiswig

Paul Vetter

Linda Weigand

Executive Director: Glenda Childress



pbjconnections

9800 Jug Street Road NW

Pataskala OH 43062

www.pbjconnections.org

info@pbjconnections.org

STD
USPOSTAGE PD
PERMIT 333
PATASKALA OH
43062